

LiveSlide

User Guide

Version 1.3.0

Contents

1. [Overview](#)
2. [Installation](#)
3. [Settings & Configuration](#)
4. [Sharing Your Screen or Webcam](#)
5. [The Viewer Experience](#)
6. [Licensing](#)
7. [Troubleshooting](#)

1. Overview

LiveSlide is a desktop application that lets you share your screen or webcam with a large audience in real time. Viewers join by scanning a QR code or tapping a link — no app install required, it works in any web browser.

Key Features

- One-click screen or webcam sharing
- QR code and URL for instant viewer access
- Works on local networks or over the internet via secure tunnel
- High quality video with configurable codec, resolution, and frame rate
- Optional audio capture with live VU metering and PFL monitoring
- Live camera and microphone switching during a session
- Viewer count and session management
- Available for macOS and Windows

How It Works

1. You start a sharing session in LiveSlide
2. LiveSlide generates a QR code and viewer URL
3. Viewers scan the QR code or tap the link on their phone, tablet, or computer
4. Your screen or webcam is streamed to all connected viewers in real time

2. Installation

macOS

1. Download the `.dmg` file
2. Open the DMG and drag LiveSlide to your Applications folder
3. Launch LiveSlide from Applications
4. On first launch, macOS may ask you to confirm you want to open the app — click **Open**

Windows

1. Download the `.exe` installer
2. Run the installer and follow the prompts
3. LiveSlide will be available from the Start menu

System Permissions

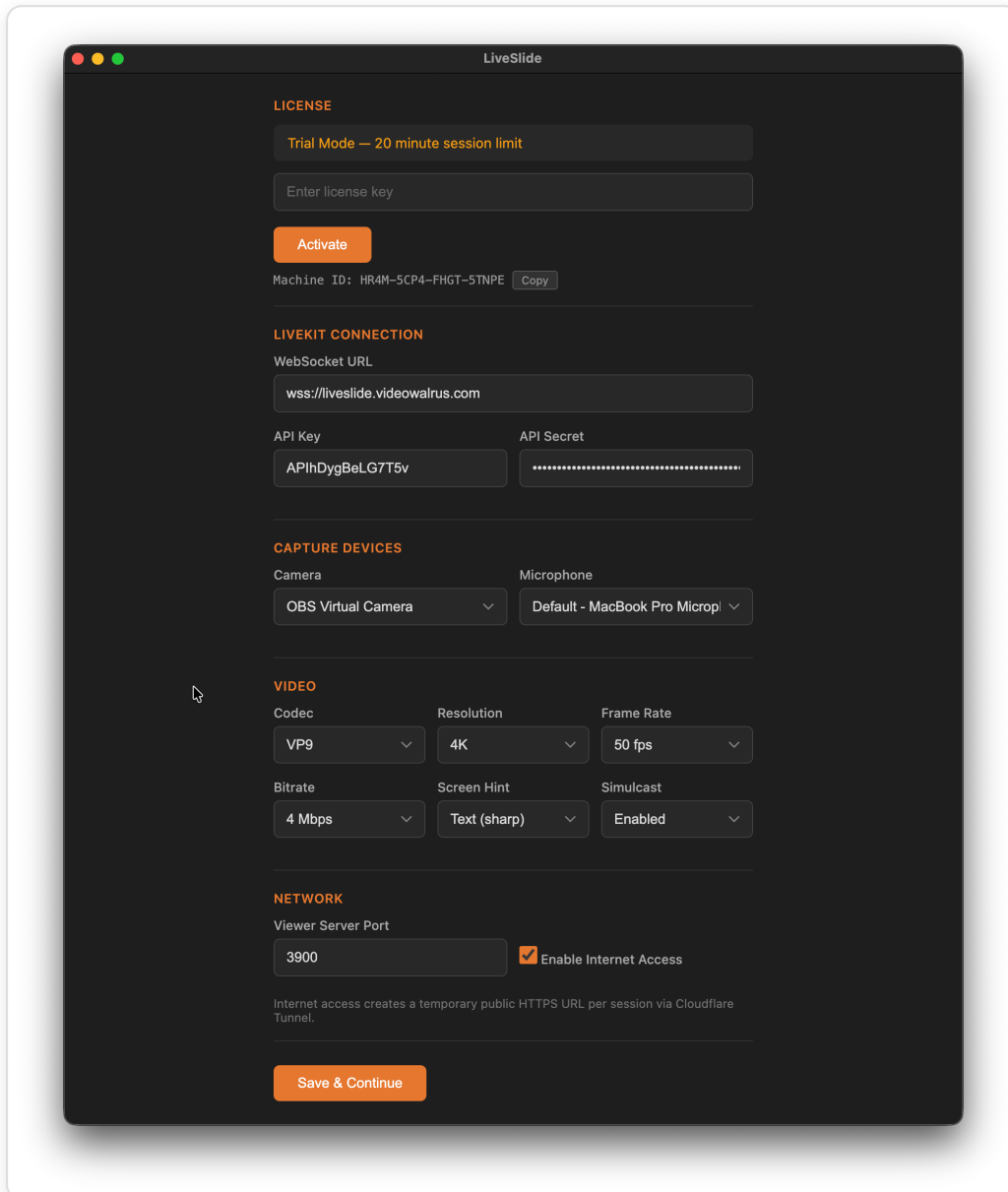
LiveSlide needs the following permissions to function:

- **Screen Recording** — required for screen sharing (macOS will prompt on first use)
- **Camera** — required for webcam sharing
- **Microphone** — required if you want to share audio

Tip: On macOS, if screen recording permission is denied, you'll see a warning on the main screen. Go to **System Settings > Privacy & Security > Screen Recording** to enable it for LiveSlide.

3. Settings & Configuration

The first time you open LiveSlide, you'll be taken to the Settings page. Configure your server connection and preferences here.



The Settings view with server connection, device, video, and network options

Server Connection

LiveSlide requires a LiveKit-compatible server for media routing. Enter the credentials provided by your administrator:

Field	Description	Example
WebSocket URL	The server address	<code>wss://liveslide.yourserver.com</code>

API Key	Your server API key	APIxxxxxxxx
API Secret	Your server API secret	Keep this confidential

Capture Devices

- **Camera** — select which camera to use for webcam sharing, or leave as Default
- **Microphone** — select an audio input device, or choose *None* for video-only

Video Settings

Setting	Options	Recommended
Codec	VP8, H.264, VP9, AV1	VP9 for quality, VP8 for compatibility
Resolution	720p, 1080p, 1440p, 4K	1080p for most uses
Frame Rate	15 – 60 fps	30 fps for slides, 50/60 for video content
Bitrate	1 – 8 Mbps	4 Mbps
Screen Hint	Text (sharp), Detail, Motion (smooth)	Text for presentations, Motion for video
Simulcast	Enabled / Disabled	Enabled — adapts quality to each viewer's connection

Network

- **Viewer Server Port** — the port used for the local viewer server (default: 3900)
- **Enable Internet Access** — when checked, creates a temporary public HTTPS URL via Cloudflare Tunnel so viewers can join from anywhere on the internet, not just the local network

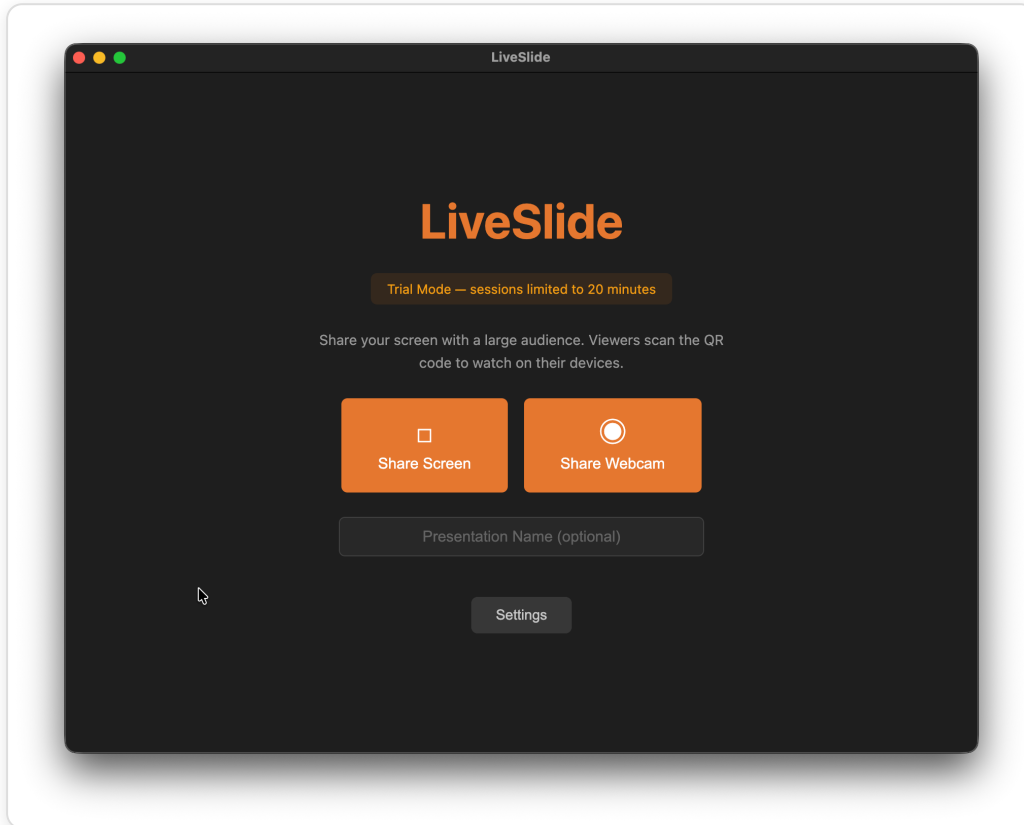
Tip: If all your viewers are on the same Wi-Fi or LAN, leave Internet Access disabled for shorter QR codes and faster connections.

Click **Save & Continue** when you're ready.

4. Sharing Your Screen or Webcam

Starting a Session

From the main screen, choose how you want to share:



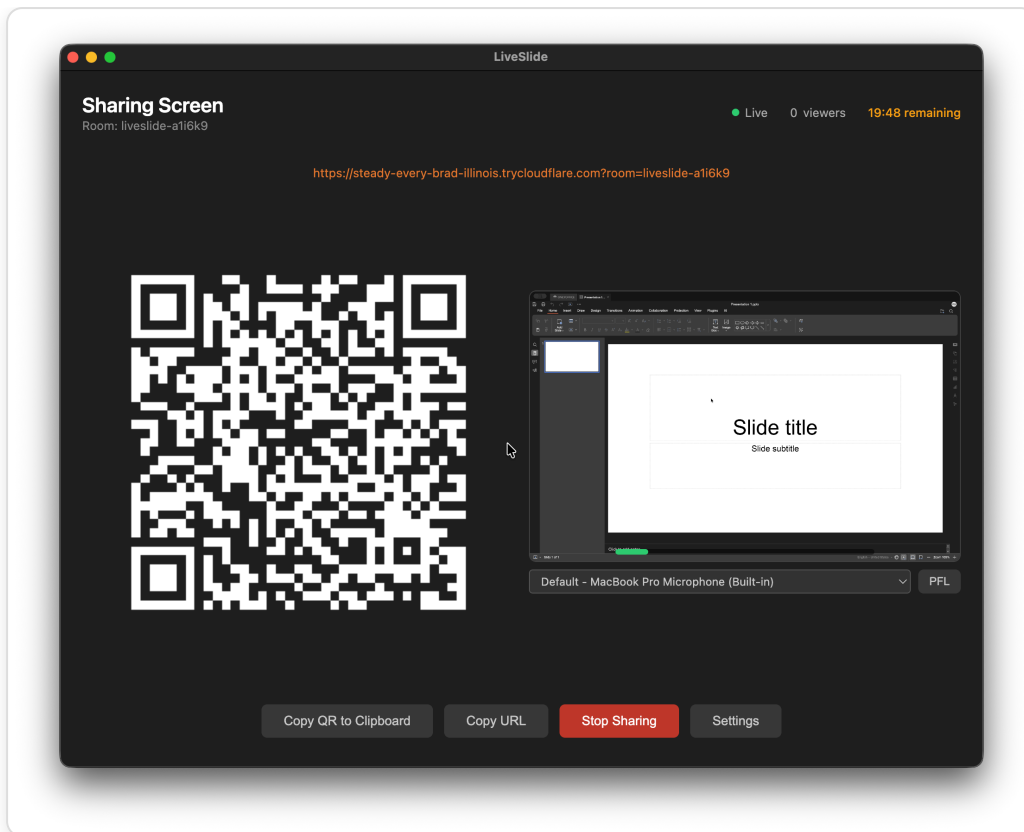
The main screen with Share Screen and Share Webcam options

- **Share Screen** — shares your entire screen or a specific window. Best for presentations, demos, and slides.
- **Share Webcam** — shares your camera feed. Best for face-to-camera sessions.

You can optionally enter a **Presentation Name** which will be displayed to viewers in their browser.

During a Session

Once sharing starts, you'll see the sharing view:



The sharing view with QR code, preview, viewer count, and controls

Sharing View Features

- **QR Code** — display this on a screen or projector for viewers to scan with their phones
- **Viewer URL** — the clickable link viewers can use to join
- **Video Preview** — a live preview of what viewers see
- **Viewer Count** — shows how many viewers are currently connected
- **Live Indicator** — green dot confirms your session is active
- **Copy QR to Clipboard** — copies the QR code as an image (paste into messaging apps, emails, or presentations)
- **Copy URL** — copies the viewer link as text
- **Stop Sharing** — ends the session and disconnects all viewers
- **Settings** — access settings without stopping the session

Audio Monitoring

When audio is being captured, additional controls appear below the video preview:

- **VU Meter** — a green level bar shows your audio input level. It turns red when the signal is too hot.
- **Audio Device Selector** — switch microphones during a live session without interrupting the stream

- **PFL Button** — (Pre-Fade Listen) press this to hear the captured audio through your speakers, letting you monitor exactly what viewers hear. Press again to stop monitoring. The button turns orange when active.

Live Device Switching (Webcam Mode)

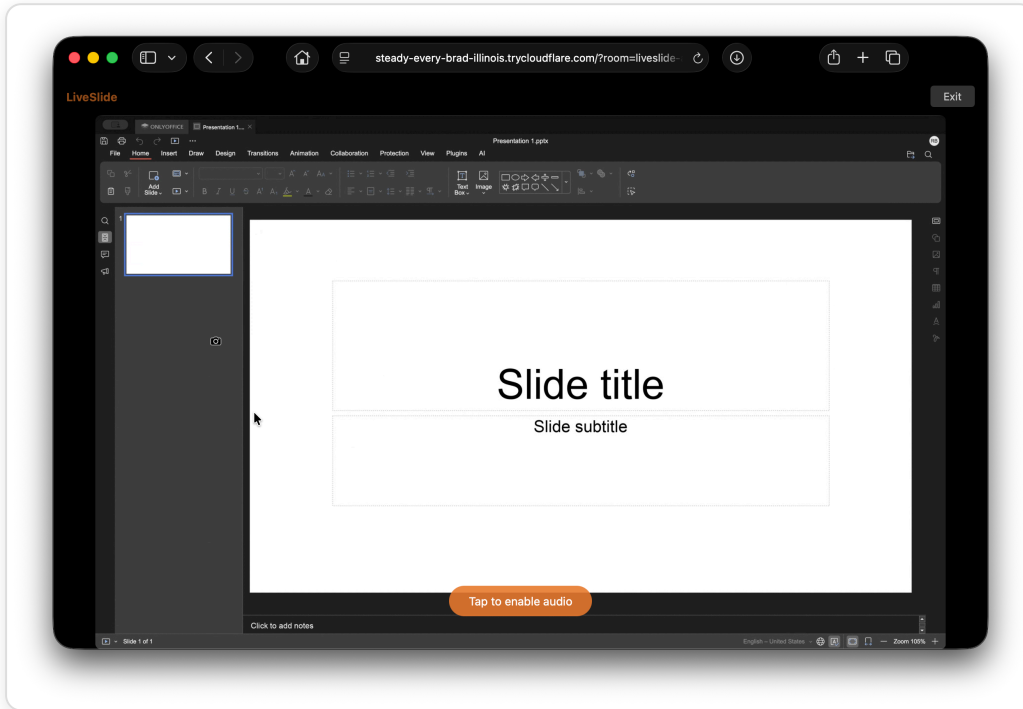
When sharing your webcam, dropdown selectors appear below the preview for both camera and microphone. You can switch devices during a live session — the transition is seamless for viewers.

Stopping a Session

Click **Stop Sharing** to end the session. All viewers will see a "The presentation has finished" message. You can start a new session at any time.

5. The Viewer Experience

Viewers don't need to install anything. They simply scan the QR code or tap the link to watch in their web browser.



The viewer page showing the shared screen in a web browser

Joining

1. Scan the QR code with your phone's camera, or tap/click the viewer URL
2. The stream opens in your web browser — no app or account required
3. If audio is being shared, tap **"Tap to enable audio"** to unmute (required by browsers for autoplay)

Viewer Controls

Action	Mobile	Desktop
Enter/exit fullscreen	Double tap	Double click
Enable audio	Tap the prompt	Click the prompt
Mute/Unmute	Tap the Mute button	Click the Mute button
Exit session	Tap Exit	Click Exit
Rejoin after exiting	Tap Rejoin	Click Rejoin

Note: In fullscreen mode, the controls and cursor automatically fade out after 3 seconds of inactivity. Move the mouse or tap the screen to bring them back.

Viewer States

- **Connecting** — spinner shown while establishing connection
- **Watching** — live stream with branding bar and optional mute button
- **You left the presentation** — shown if you tap Exit while the feed is still live, with a Rejoin button
- **The presentation has finished** — shown when the presenter stops sharing
- **Connection error** — shown if the connection fails, with a Retry button

6. Licensing

Trial Mode

LiveSlide works in Trial Mode without a license key. Trial sessions are limited to **20 minutes**. When the time expires, the session will automatically stop and you'll be taken to the Settings page to enter a license key.

Activating a License

1. Open Settings (click the Settings button on the main screen)
2. Enter your license key in the **License** section
3. Click **Activate**
4. Once activated, the trial time limit is removed and your licensee name is displayed

Machine ID

Some licenses are bound to a specific machine. Your Machine ID is displayed at the bottom of the License section. Click the **Copy** button next to it to copy it to your clipboard — you may need to provide this when requesting a license.

Deactivating a License

To transfer your license to another machine, click **Deactivate** in the License section of Settings.

7. Troubleshooting

Issue	Solution
Screen recording permission denied (macOS)	Go to System Settings > Privacy & Security > Screen Recording and enable LiveSlide. You may need to restart the app.
Camera or microphone not appearing	Check System Settings > Privacy & Security for Camera and Microphone permissions. Restart LiveSlide after granting access.
Viewers can't connect on local network	Ensure viewers are on the same Wi-Fi network. Check that port 3900 (or your configured port) is not blocked by a firewall.
Viewers can't connect via internet	Enable Internet Access in Settings. Wait for the tunnel to establish (status shown during startup). Check your internet connection.
No audio on viewer side	Viewers must tap " Tap to enable audio " — this is a browser requirement, not a LiveSlide limitation.
Poor video quality	Try lowering the resolution or bitrate in Settings. Enable Simulcast so viewers with slower connections receive an adapted stream.
"Starting server..." hangs	Another application may be using port 3900. Change the Viewer Server Port in Settings to a different number (e.g., 3901).
Trial expired mid-session	Enter a license key in Settings to remove the 20-minute limit.

Need help? Contact us at www.videowalrus.com